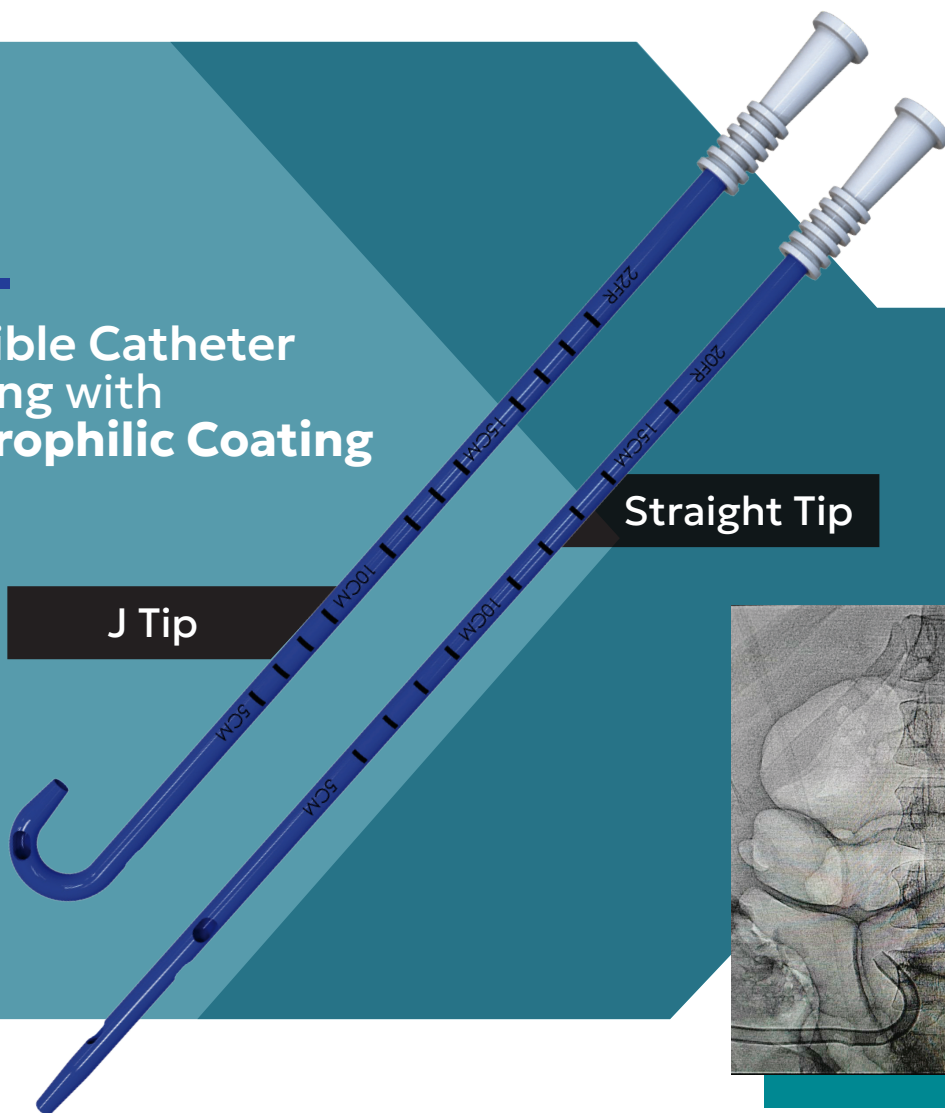


PerforX[®]

Large Bore Catheter

PerforX[®] facilitates drainage of thick fluids using image-guided Seldinger access technique in a variety of drainage applications (abscesses, biliary, thoracic drainage and more).

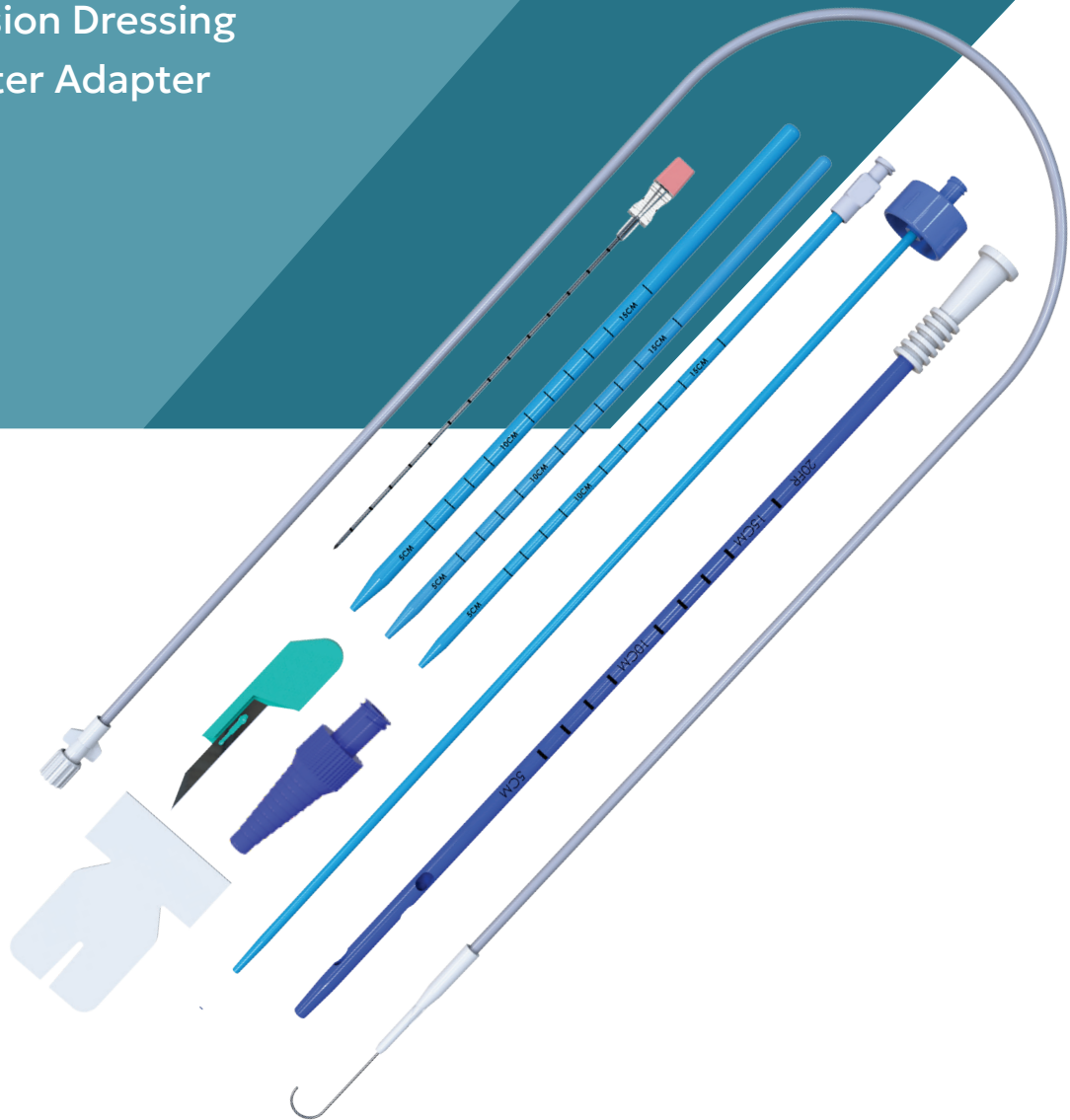
Flexible Catheter
Tubing with
Hydrophilic Coating



Smooth Access | Patient Comfort | Superior Performance

Set Includes

- Scalpel Blade #11
- Chiba Needle - 18G 15cm
- Amplatz Ultra Stiff[®] Guidewire
- 3 sequential Dilators
- Catheter with Straightener
- Occlusion Dressing
- Catheter Adapter



Smooth Access & Operation



The tapered tip straightener facilitates smooth insertion of the catheter into the target area



Sequential dilators help to dilate or stretch the tissue sequentially before catheter placement



The Ultra Stiff[®] Guidewire improves pushability and trackability, enhancing support and stability during procedures



The length markings on catheters and dilators assist in determining the depth of placement

Patient Comfort & Superior Performance



Soft, flexible catheter tubing reduces trauma and improves patient comfort



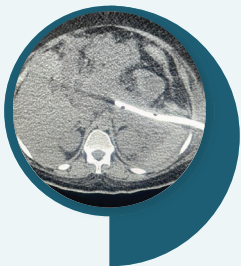
The hydrophilic coating reduces friction and enhances the ease of insertion



Multiple large oval holes, positioned spirally, increase drainage capability



Echogenic cannula tip enhances visibility under ultrasound



- The radiopacity of the catheter guarantees radiographic confirmation of catheter positioning.
- Image guided Seldinger access technique is minimally invasive to the patient.



Catheter adapter enables luer syringe to be connected securely, ensuring effective suction/flushing, without leakage

Product Specifications

Product Name	Size (in Fr)	Length (in cm)	Amplatz Ultra Stiff® Guidewire (inch)	Dilator Size (in Fr)
PerforX® Large Bore Catheter Set - Straight	20	30	0.035	8, 14 & 18
	22		0.035	10, 16 & 20
	24		0.038	12, 18 & 22
	26		0.038	12, 20 & 24
	28		0.038	14, 22 & 26
	30		0.038	14, 24 & 28
PerforX® Large Bore Catheter Set - J Tip	20	30	0.035	8, 14 & 18
	22		0.035	10, 16 & 20
	24		0.038	12, 18 & 22
	26		0.038	12, 20 & 24
	28		0.038	14, 22 & 26
	30		0.038	14, 24 & 28
PerforX® Large Bore Catheter Straight	20	30	NA	NA
	22			
	24			
	26			
	28			
	30			
PerforX® Large Bore Catheter J Tip	20	30	NA	NA
	22			
	24			
	26			
	28			
	30			

360° Product
Experience



BLUENEEM®
CLINICIANS' TRUSTED PARTNER



Blue Neem Medical Devices Pvt Ltd
Plot Nos 270 & 271, Road No 5
Harohalli Industrial Area, Phase II
Kanakapura Taluk, Ramanagara Dist - 562112
Karnataka, India



+91 97399 72855



enquiry@blueneem.com



www.blueneem.com