

**PerforX**<sup>™</sup>

# Large Bore Catheter Set

Flexible Catheter  
tubing with  
**Hydrophilic Coating**

J Tip

Straight Tip

Smooth Access | Patient Comfort | Superior Performance

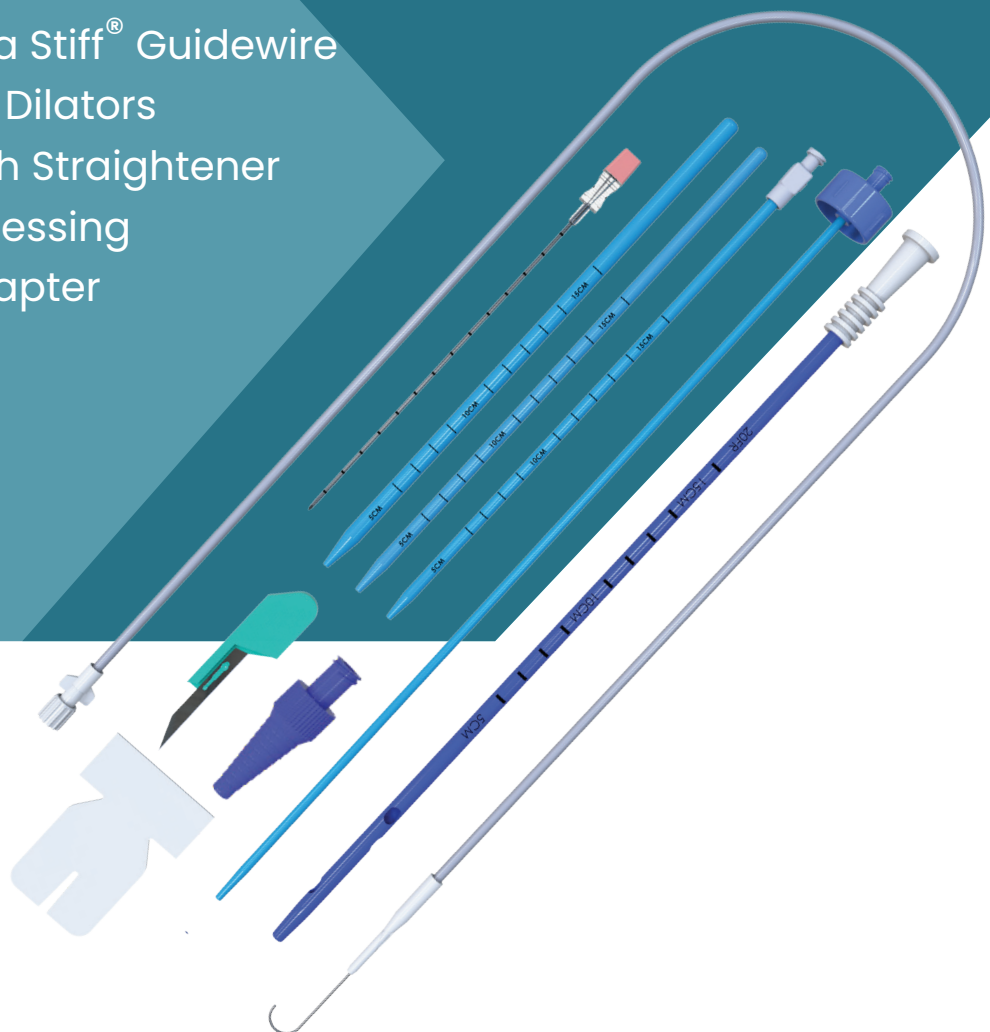
# PerforX<sup>™</sup>

## Large Bore Catheter Set

PerforX<sup>™</sup> facilitates drainage of thick fluids using imaging-guided Seldinger access technique in a variety of drainage applications (abscesses, biliary, thoracic drainage and more).

### Set Content

- #11 Scalpel Blade
- Initial Puncture Needle-18G 15cm
- Amplatz Ultra Stiff<sup>®</sup> Guidewire
- 3 sequential Dilators
- Catheter with Straightener
- Occlusion Dressing
- Catheter Adapter



# PerforX™ Large Bore Catheter Set

## Smooth Access & Operation



The tapered tip straightener facilitates smooth insertion of the catheter into the target area



Sequential dilators help to dilate or stretch the tissue sequentially before catheter placement



The Ultra Stiff® Guidewire improves pushability and trackability, enhancing support and stability during procedures



The length markings on catheters and dilators assist in determining the depth of placement

## Patient Comfort & Superior Performance



Soft, flexible catheter tubing reduces trauma and improves patient comfort



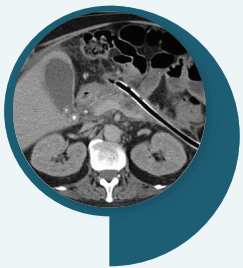
The hydrophilic coating reduces friction and enhances the ease of insertion



Multiple large oval holes, positioned spirally, increase drainage capability



Echogenic cannula tip enhances visibility under ultrasound



- The radiopacity of the catheter guarantees radiographic confirmation of catheter positioning.
- Imaging guided Seldinger access technique is minimally invasive to the patient.



Catheter adapter enables luer syringe to be connected securely, ensuring effective suction/flushing, without leakage

## PerforX™ - Large Bore Catheter Set

Catheter Size (in Fr)	Straightener Size (in Fr)	IP Needle Size (in G)	Amplatz Ultra Stiff® Guidewire (inch)	Dilator Size (in Fr)		
20	10	18G - 15cm	0.035"	8	14	18
22	12	18G - 15cm	0.035"	10	16	20
24	14	18G - 15cm	0.038"	12	18	22
26	16	18G - 15cm	0.038"	12	20	24
28	18	18G - 15cm	0.038"	14	22	26
30	18	18G - 15cm	0.038"	14	24	28

**BLUENEEM**®  
CLINICIANS' TRUSTED PARTNER

360° Product  
Experience



**Blue Neem Medical Devices Pvt Ltd**  
Plot Nos 270 & 271, Road No 5  
Harohalli Industrial Area, Phase II  
Kanakapura Taluk, Ramanagara Dist - 562112  
Karnataka, India



+91 97399 72855



[enquiry@blueneem.com](mailto:enquiry@blueneem.com)



[www.blueneem.com](http://www.blueneem.com)