

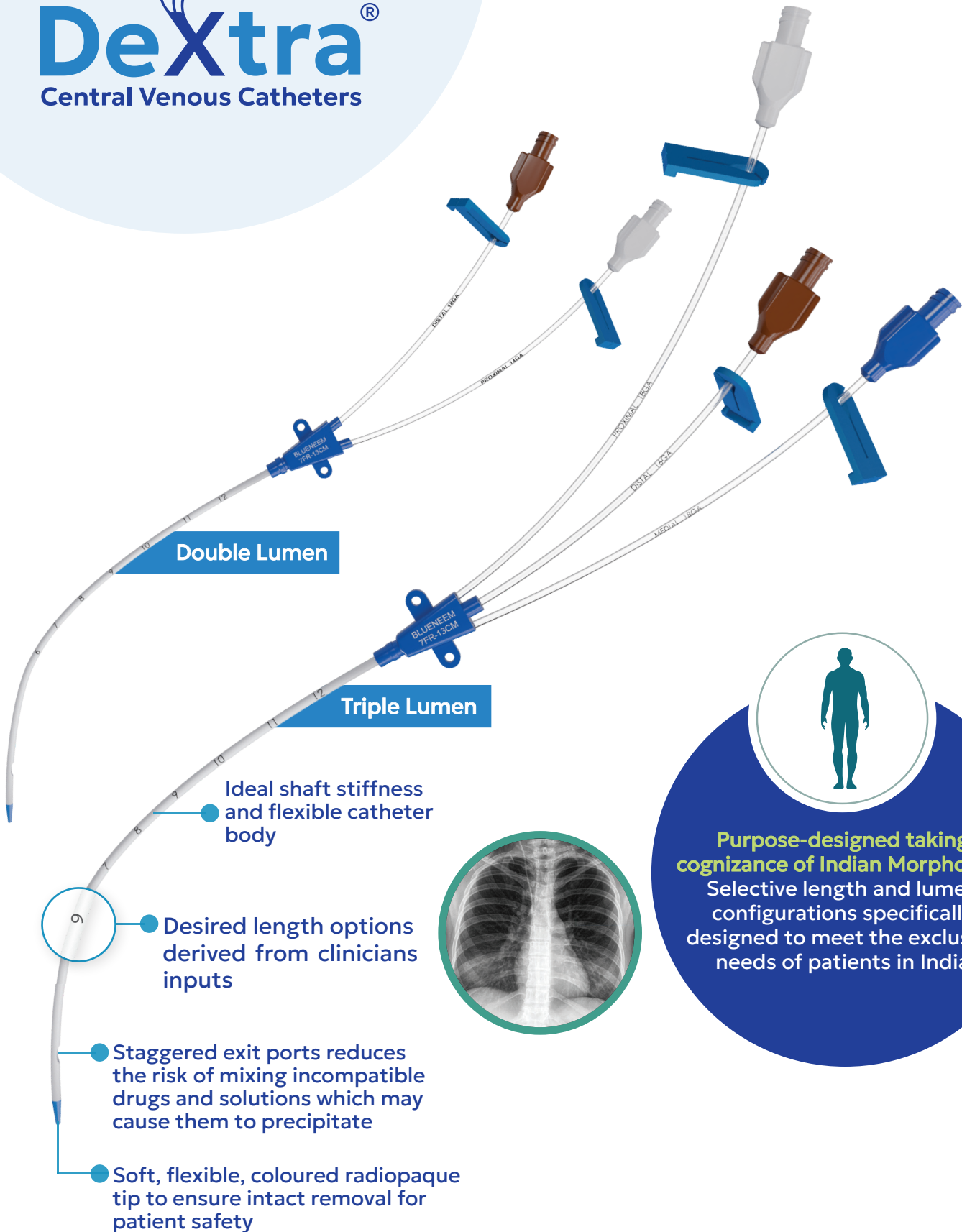
**Dextra**<sup>®</sup>  
Central Venous Catheters



**CruX** - Triple Lumen or Double Lumen

# Dextra®

Central Venous Catheters



Double Lumen

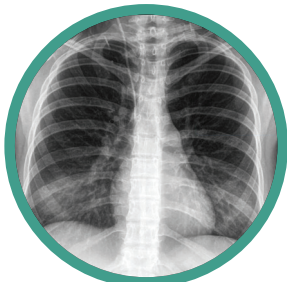
Triple Lumen

Ideal shaft stiffness and flexible catheter body

Desired length options derived from clinicians inputs

Staggered exit ports reduces the risk of mixing incompatible drugs and solutions which may cause them to precipitate

Soft, flexible, coloured radiopaque tip to ensure intact removal for patient safety



**Purpose-designed taking cognizance of Indian Morphology**  
Selective length and lumen configurations specifically designed to meet the exclusive needs of patients in India

The Bluneem Dextra® product range offers a broad portfolio of Central Venous Catheter (CVC) sets for adult patients.



## Key Features & Benefits:

- Desired length options derived from clinicians' inputs: 13 cm and 16 cm
- **Stainless Steel Guidewire with Nitinol Core:** The stiffness of stainless steel with the kink resistance of Nitinol and the soft J-tip in combination provide optimal conditions of torque, ease of insertion & prevention of vessel perforation.
- Ideal shaft stiffness and flexibility of the catheter body that is uniquely configured to achieve a smooth surface, complimented with a high-calibre dilator for trouble-free insertion.
- Advancer that is integrated with the guidewire-holder assembly for achieving ergonomics of operator movements.
- Soft flexible catheter tip helps to reduce trauma
- Coloured, radiopaque catheter tip to ensure intact removal for patient safety

## Set Includes

- Triple/Double Lumen Catheter with clamps 7 Fr
- Guidewire with J tip 0.035" / 0.025"x 60cm, with advancer
- Introducer Needle Straight/Y needle 18Gx7cm
- Scalpel Blade #11
- Tissue Dilator 8.5F x 10cm
- Syringe-Luer Lock/Slip 5ml
- 22G Needle 1.5"
- Additional site Catheter Fixing Disc & Cap
- Dust caps-3/2, non-vented
- Occlusion Dressing 5 x 5.7cm



# Product Specifications

Name	Lumen	Size (Fr)	Length (cm)	Guidewire Size	Introducer needle
Dextra® CruX - Triple Lumen	3	7	13 & 16	0.035"	Straight / Y
Dextra® CruX - Double Lumen	2	7	13 & 16	0.025"	Straight / Y



360° Product Experience



**Blue Neem Medical Devices Pvt Ltd**  
Plot Nos 270 & 271, Road No 5, Harohalli Industrial Area, Phase II  
Kanakapura Taluk, Ramanagara Dist - 562112, Karnataka, India



**+91 97399 72855**



**enquiry@blueneem.com**