


BLUENEEM[®]
CLINICIANS' TRUSTED PARTNER

INTERVENTIONAL SYSTEMS
CENTRAL ACCESS



Dextra[®]

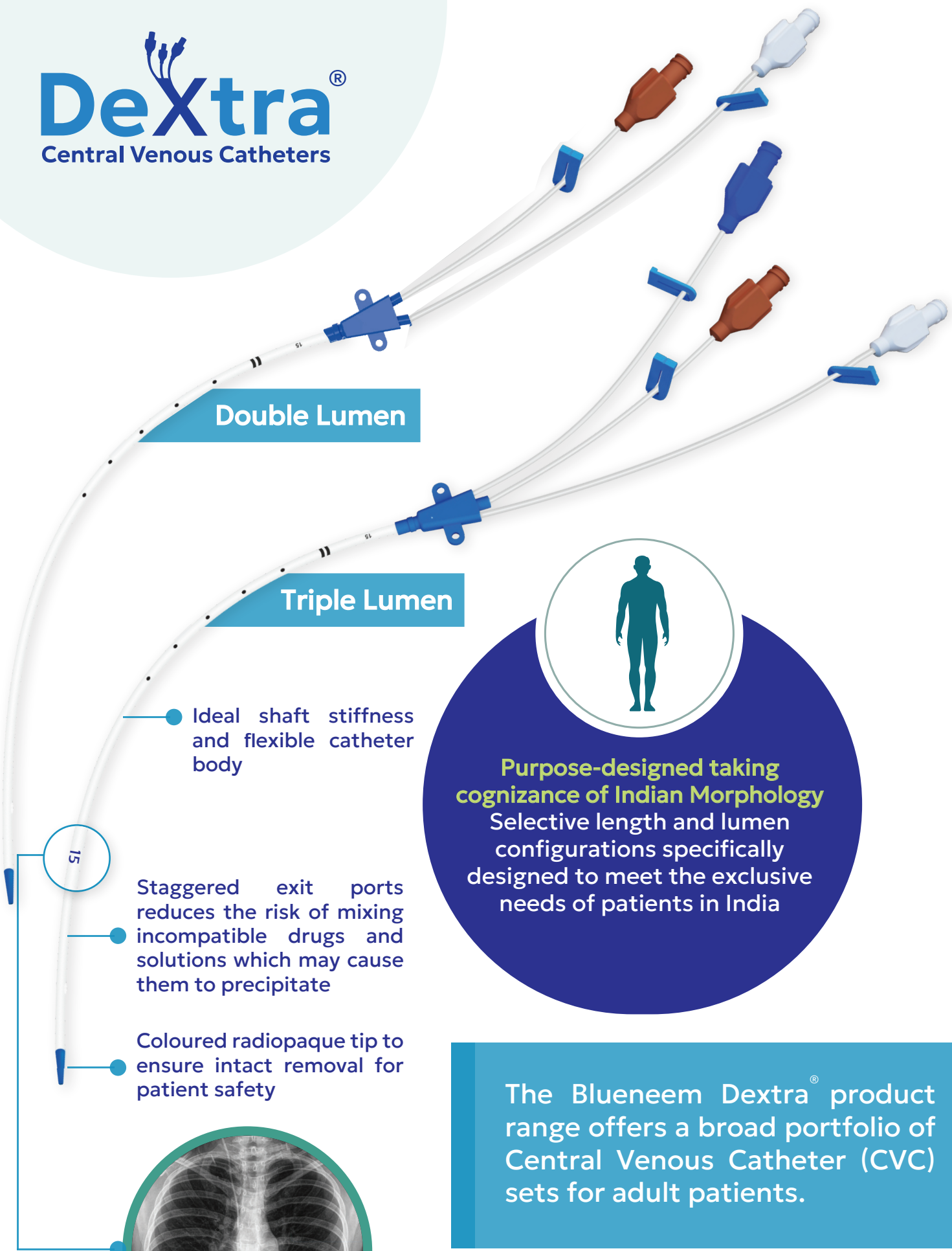
Central Venous Catheters

From
Clinicians' Trusted Partner

CruX - Triple Lumen or Double Lumen

Dextra[®]

Central Venous Catheters



Double Lumen

Triple Lumen

● Ideal shaft stiffness and flexible catheter body

15

● Staggered exit ports reduces the risk of mixing incompatible drugs and solutions which may cause them to precipitate

● Coloured radiopaque tip to ensure intact removal for patient safety



Purpose-designed taking cognizance of Indian Morphology
Selective length and lumen configurations specifically designed to meet the exclusive needs of patients in India

The Bluneem Dextra[®] product range offers a broad portfolio of Central Venous Catheter (CVC) sets for adult patients.

Desired length options derived from clinicians inputs

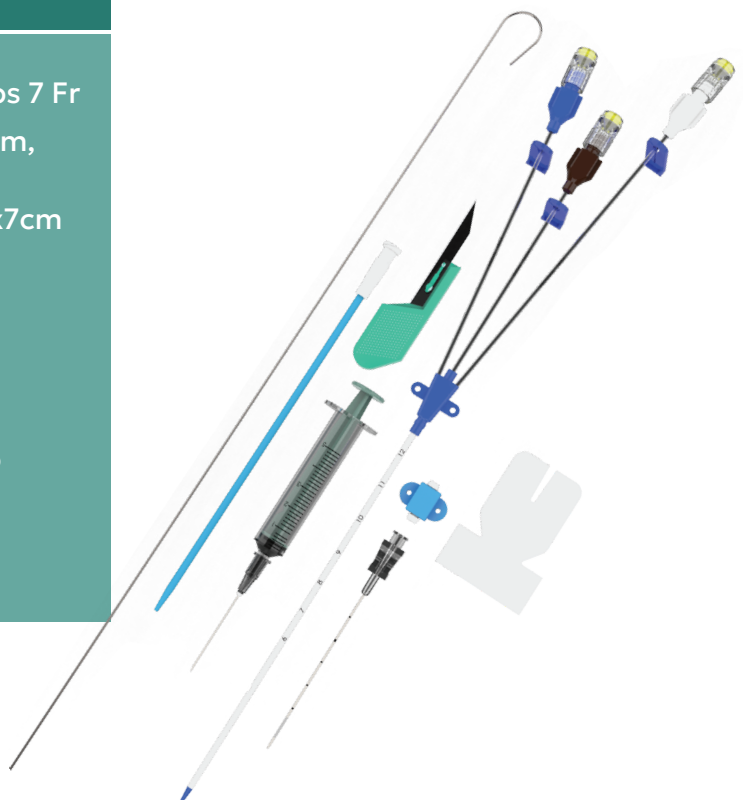


Key Features & Benefits:

- Desired length options derived from clinicians' inputs: 13 cm and 16 cm
- **Stainless Steel Guidewire with Nitinol Core:** The stiffness of stainless steel with the kink resistance of Nitinol and the soft J-tip in combination provide optimal conditions of torque, ease of insertion & prevention of vessel perforation.
- Ideal shaft stiffness and flexibility of the catheter body that is uniquely configured to achieve a smooth surface, complimented by a high-calibre dilator for trouble-free insertion.
- Non-detachable tip of guidewire-pusher that is integrated with the guidewire-holder assembly for achieving ergonomics of operator movements.
- Coloured, radiopaque catheter tip to ensure intact removal for patient safety

Set Includes

- Triple/Double Lumen Catheter with clamps 7 Fr
- Guidewire with J tip 0.035" / 0.025"x 60cm, with advancer
- Introducer Needle Straight/Y needle 18Gx7cm
- Scalpel Blade #11
- Tissue Dilator 8.5F x 10cm
- Syringe-Luer Lock/Slip 5ml
- 22G Needle 1.5"
- Additional site Catheter Fixing Disc & Cap
- Dust caps-3/2, non-vented
- Occlusion Dressing 5 x 5.7cm



Product Specifications

Name	Lumen	Size (Fr)	Length (cm)	Guidewire Size	Introducer needle
Dextra® CruX - Triple Lumen	3	7	13	0.035"	Straight
			13	0.035"	Y
			16	0.035"	Straight
			16	0.035"	Y
Dextra® CruX - Double Lumen	2	7	13	0.025"	Straight
			13	0.025"	Y
			16	0.025"	Straight
			16	0.025"	Y



Blue Neem Medical Devices Pvt Ltd
Plot Nos 270 & 271, Road No 5, Harohalli Industrial Area, Phase II
Kanakapura Taluk, Ramanagara Dist - 562112, Karnataka, India



+91 97399 72855



enquiry@blueneem.com