


BLUENEEM®

INTERVENTIONAL SYSTEMS
CENTRAL ACCESS



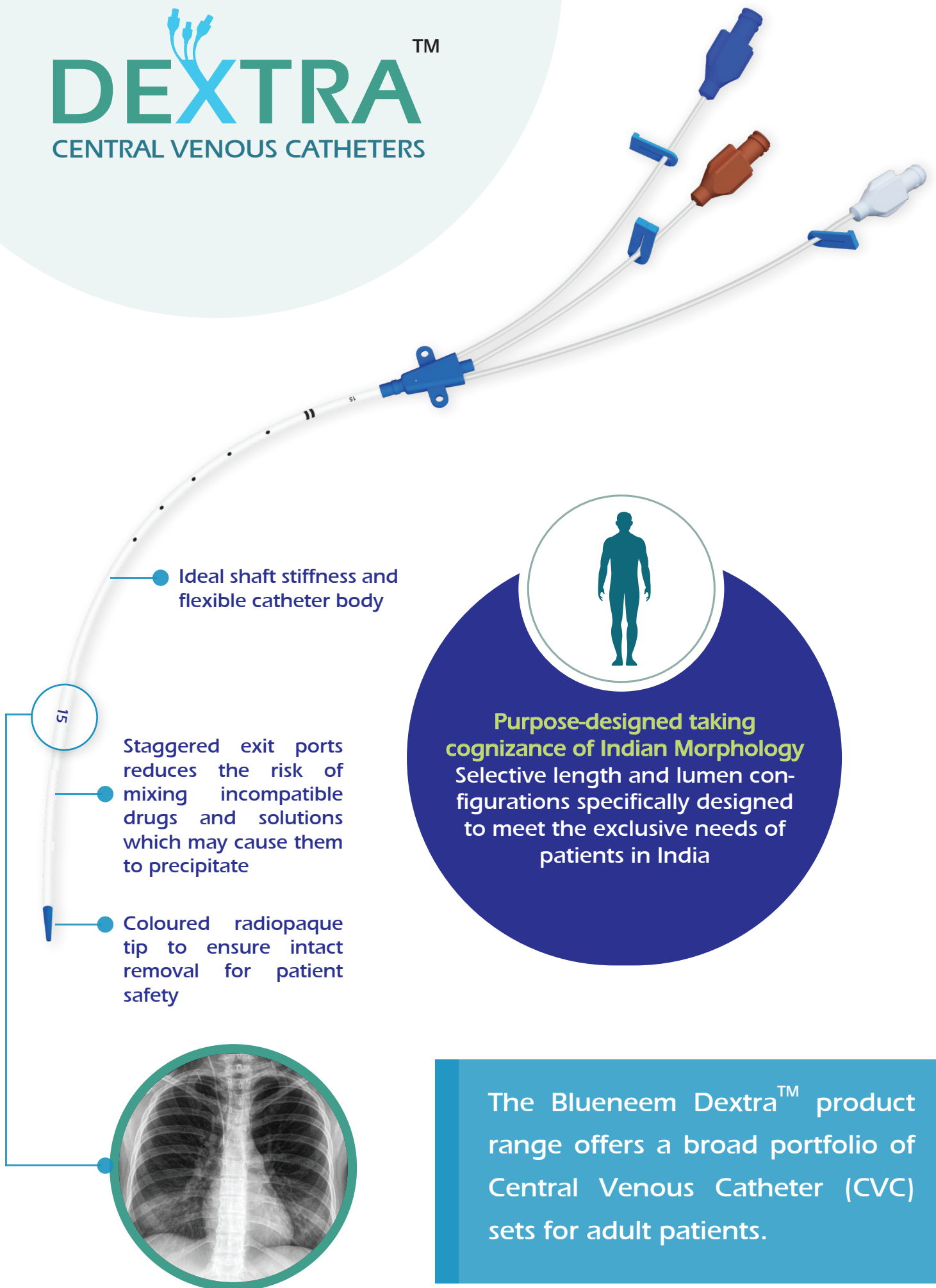
DEXTRA™
CENTRAL VENOUS CATHETERS

From
Clinicians' Trusted Partner

DEXTRA™ CruX

DEXTRA™

CENTRAL VENOUS CATHETERS

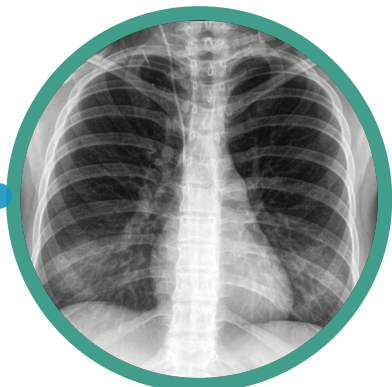


● Ideal shaft stiffness and flexible catheter body

15

● Staggered exit ports reduces the risk of mixing incompatible drugs and solutions which may cause them to precipitate

● Coloured radiopaque tip to ensure intact removal for patient safety



Desired length options derived from clinicians inputs



Purpose-designed taking cognizance of Indian Morphology
Selective length and lumen configurations specifically designed to meet the exclusive needs of patients in India

The Bluneem Dextra™ product range offers a broad portfolio of Central Venous Catheter (CVC) sets for adult patients.



The BLUENEEM[®] DEXTRA[™] Advantage:

- Desired length options derived from clinicians' inputs: 13 cm and 16 cm
- Stainless Steel Guidewire with Nitinol Core: The stiffness of stainless steel with the kink resistance of Nitinol and the soft J-tip in combination provide optimal conditions of torque, ease of insertion & prevention of vessel perforation.
- Ideal shaft stiffness and flexibility of the catheter body that is uniquely configured to achieve a smooth surface, complimented by a high-calibre dilator for trouble-free insertion.
- Non-detachable tip of guidewire-pusher that is integrated with the guidewire-holder assembly for achieving ergonomics of operator movements.
- Coloured, radiopaque catheter tip to ensure intact removal for patient safety

Set Components

- 7Fr Triple lumen indwelling polyurethane Catheter with clamps
- Guidewire with J tip 0.035" x 60cm with advancer
- Introducer Needle 18G x 7cm
- Scalpel Blade #11
- Tissue Dilator 8.5F x 10cm
- 5ml Luer Slip Syringe
- 22G Needle 1.5"
- Additional site Catheter Fixing Disc & Cap
- Dust caps-3, non-vented
- Occlusion Dressing 5 x 5.7cm

Product Specifications

Name	Lumen	Size(Fr)	Length(cm)	Guidewire Size
Dextra™ CruX	3	7	13 & 16	0.035"



www.blueneem.com



Blue Neem Medical Devices Pvt Ltd

Plot Nos 270 & 271, Road No 5, Harohalli Industrial Area, Phase II
Kanakapura Taluk, Ramanagara Dist - 562112, Karnataka, India



+91 97399 72855



enquiry@blueneem.com