

DURAFLEX T STENT

REINFORCED SILICONE TUMOR STENT

USED TO MAINTAIN LUMINAL
PATENCY AND FLOW RATE
DURING EXTRINSIC
COMPRESSION OF URETER



- Uncompromised luminal patency under external pressure
- Ease of deployment
- Sustained patient comfort
- Exemplary durability

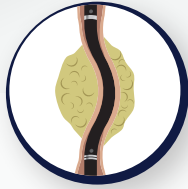


MRI CONDITIONAL

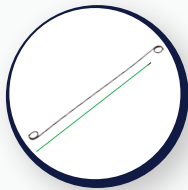
DURAFLEX T STENT

REINFORCED SILICONE TUMOR STENT

THE DURAFLEX ADVANTAGE



Reinforcing metal coil ensures enhanced shaft stiffness and superlative luminal patency. It helps to maintain ample flow rate during extrinsic compression of ureter, thereby relieving obstructive uropathy in MUO (Malignant Ureteral Obstruction)



Deployment identical to standard polymeric Double-J ureteral stents. Does not require Fluoroscopy or a special stent delivery system or any additional training



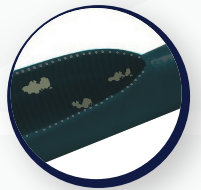
Duraflex T Stent demonstrated to be MR Conditional by non-clinical testing, hence allowing patients to undergo MRI scans with stent in situ

Caution: MRI scans to be done only with doctor's prescription.

Soft & smooth silicone-blended Polyurethane construction offers excellent patient comfort throughout the long-term indwelling period



Enveloped metal coil in silicone-blended Polyurethane diminishes likelihood of tissue invasion and ingrowth into the stent lumen



The stent's inner silicone-blended Polyurethane layer reduces encrustation by urinary salts, effectively enabling long-term indwelling period



Pigtail loops of the reinforced coil provides sufficient shape memory to avoid stent migration

| PRODUCT SPECIFICATIONS | |
|------------------------|-------------|
| Size (Fr) | Length (cm) |
| 6 | 24 |
| 7 | 24 |
| 6 | 26 |
| 7 | 26 |

PACKAGE INCLUDES

Duraflex T Stent, Pusher, Prime Wire (PTFE Coated Nitinol Guidewire with Hydrophilic Tip) and Patient Card.

